

Saving and Loading Presets

Saving brushes as presets

Save your brushes with your own settings!

Once you've **customized your brushes**, you can **save the specific settings** as presets to use later on. This way you won't have to edit the settings of the brush each time.

- Start by editing your brushes (size, opacity, flow, dynamics, etc). Edit them to suit your specific needs or by the results you wish to get with each brush.
This is best achieved through trial and error at first, so be brave and experiment.

- Once you're happy with the settings, follow the steps as shown in Figure 1 and select the **New Tool Preset**.

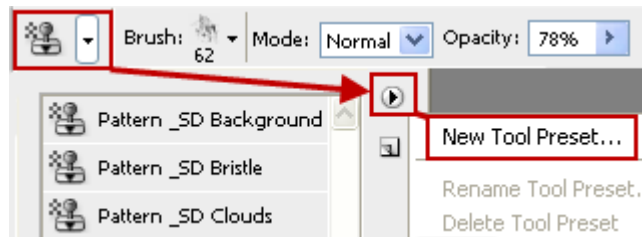


Figure 1

- Type in a Name** for your new preset and click OK.

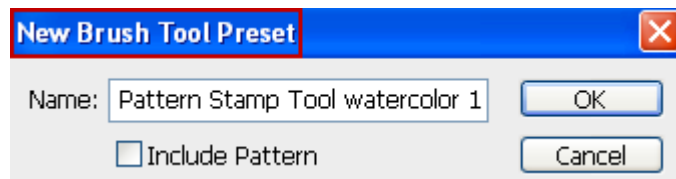



Figure 2

 Depending on the type of preset you're working with, you'll be asked if you want to include the Color, Pattern, etc. Unless you really want to use the exact color or pattern next time you select this preset, do not check the Include option displayed.

- Your new preset will be in alpha numeric order in the preset list (except if you have rearranged the presets manually in the Preset Manager).



Rearranging presets

- To **sort** your presets, open the **Preset Manager** by following the steps as shown in Figure 3, or go to **Edit → Preset Manager**.

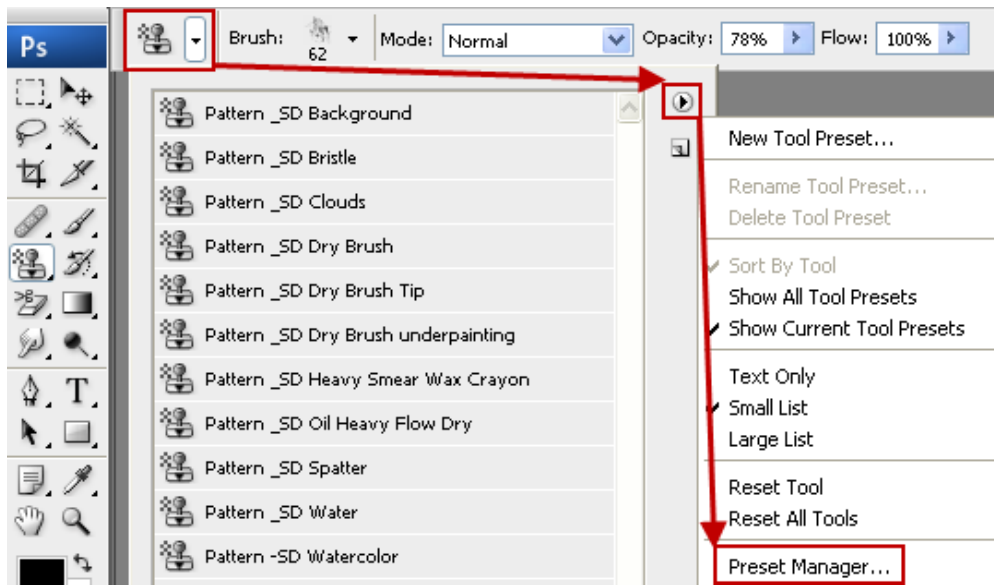


Figure 3

- Make sure you **select the Tools option** in the Preset Manager's drop down menu (Figure 4).

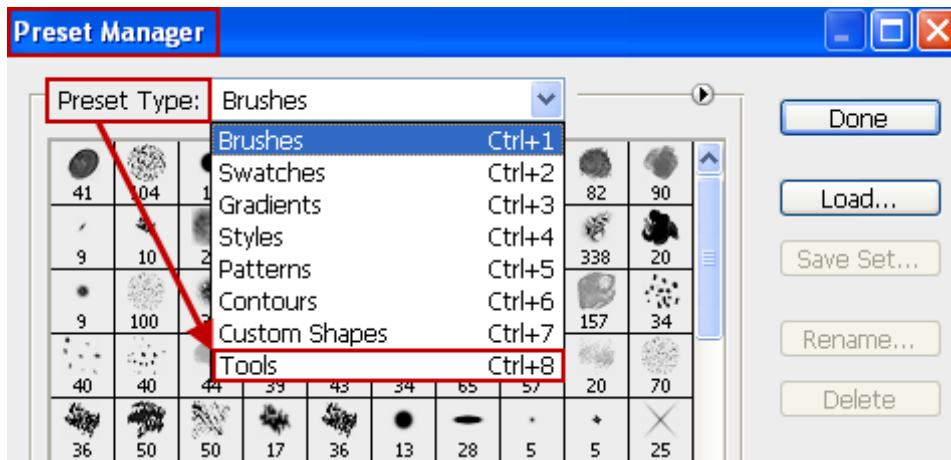



Figure 4

 Unlike with the brushes, **ALL the categories of presets are displayed in the Preset Manager**. See below how to select them individually or as a group.

- To **select multiple presets**, hold down the **Shift** key, click on the **1st** preset and then **on the last one** you want. You can now do whatever you want (rename, move or delete them).
- You can also select **non-consecutive** presets by clicking on them individually while holding down the **Ctrl** key.

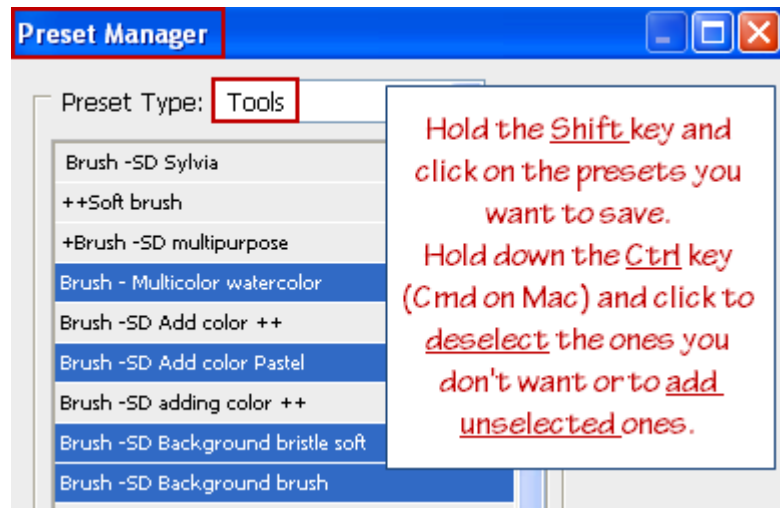


Figure 5



Saving presets

- Once you've selected the presets you want to save, click on **Save Set** (Figure 6).
- Give a **name** to your new set, and click on **Save**.

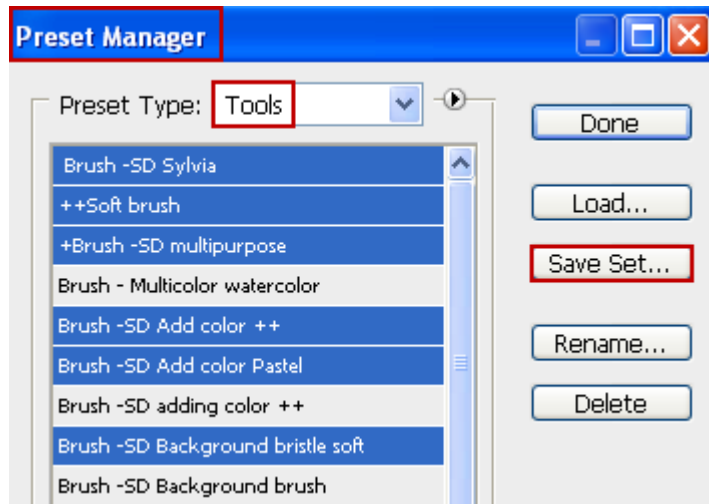


Figure 6

- Follow the steps shown in Figure 7 to **save all your presets**.

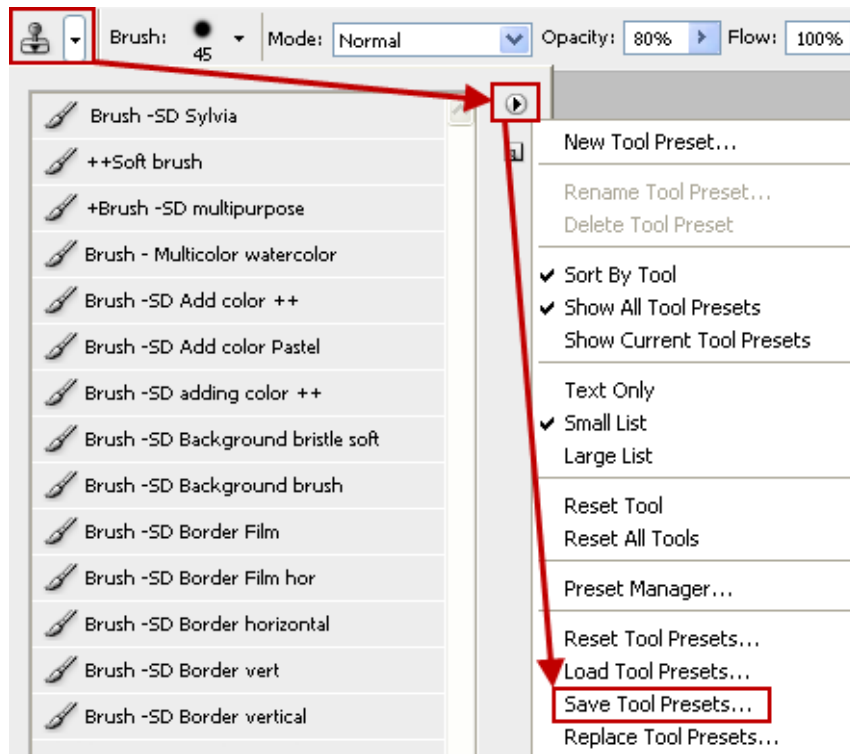



Figure 7

 Before saving your presets in Photoshop, make sure you **give them an appropriate name**, as there is no other way to know what categories (brush tool, pattern stamp tool, dodge tool, etc.) the presets have been made for.



Loading presets

You can also load presets made by other people. The file extension for presets is 'TPL'.

- Follow the steps as shown in Figure 8 to **load** the presets.

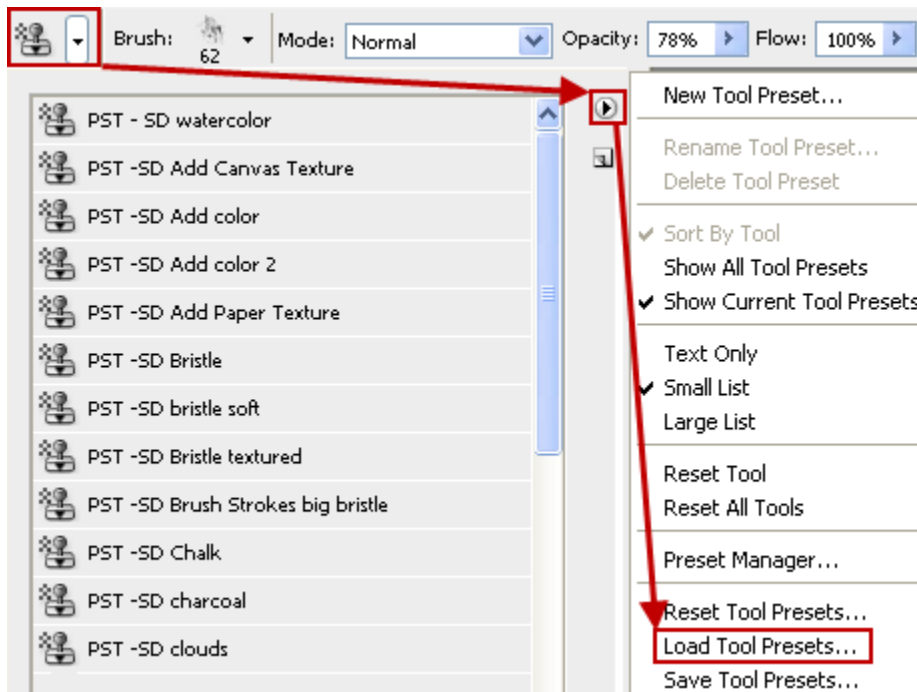


Figure 8

- After clicking the **Load Tool Presets** option, as shown in Figure 8, the Locate preset dialogue window appears. Navigate to the location of the preset you want to load, click the preset (has the TPL file extension) and then click the **Load** button as shown in Figure 9.

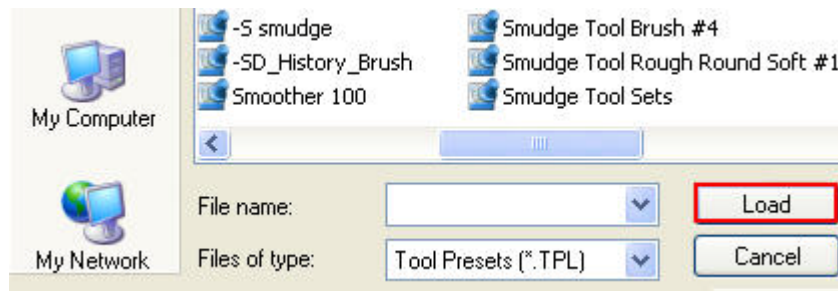


Figure 9

- Repeat this step for each preset (or set of presets) you want to load.

You now have a handy set of tools to use on all future Photoshop projects.



Please visit my website at <http://photoart-tutorials.com>
for new tutorials and goodies to download!

Feel free to contact me for more information
or feedback at sylvia@abc-impact.com

© This tutorial is copyrighted by Sylvia Lesage DiGeorgio
and cannot be shared or sold without the written consent of the copyright owner.

For many more artistic effects
check out my Photoshop Photos to Art ebook
which contains 50 high-quality tutorials.
<http://photoart-tutorials.com>